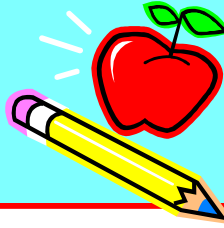


APRIL



Mrs. Evers

Greenville Elementary

aevers@gcswave.com

April 2024

Spring Has Sprung!



Word Study

Learning Targets for April...

- I can use spelling patterns and generalizations in writing words.
- I can use pronouns.
- I can use possessive pronouns.
- I can use pronoun-verb contractions.

Reading

Learning Targets for April...

- I can ask and answer questions, using the text for support, to show my understanding
- I can determine the central message and explain how it is conveyed through key details in the text.
- I can describe characters in a story and explain how their actions contribute to the sequence of events.
- I can distinguish my own point of view from that of the author, narrator, or characters.
- I can describe the logical connection between sentences and paragraphs (cause and effect).

Important Dates

4/1 Spring Break-No School

4/3 Evers' HR will take Part 1 of the OST.

4/4 Coblenz's HR will take Part 1 of the OST.

4/5 Evers' HR will take Part 2 of the OST.

4/8 Solar Eclipse-No School

4/10 Coblenz's HR will take Part 2 of the OST.

4/18 Math OST begins. Mr. Coblenz will send home a testing schedule soon.

Reminders...

- Please send your child to school with a jacket. We still have cold days ahead.

Writing

Learning Targets for April...

- I can write a narrative.
 - Introduce a character/narrator
 - Organize events
 - Use dialogue and describe actions, thoughts, and feelings
 - Provide a sense of closure

